



# GHIF

Global Health Innovation Forum

*Connecting minds, sharing solutions.*

# CONCEPT NOTE

GLOBAL HEALTH INNOVATION CHALLENGE

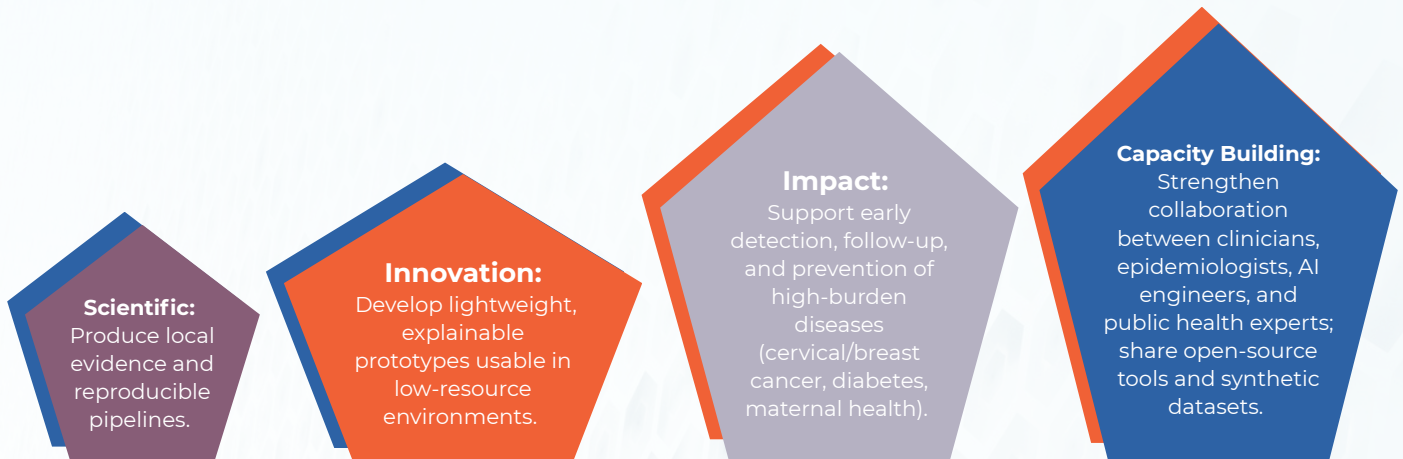
## Background and Context

The **Institut de Recherche en Santé, de Surveillance Épidémiologique et de Formation** (IRESSEF), in partnership with **AI Hub Senegal**, the **African Population and Health Research Center** (APHRC) through the **Data Science Without Borders** (DSWB) Project, and **Galsen AI**, is organizing a **multidisciplinary challenge** ahead of the Global Health Innovation Forum (GHIF) in Dakar.

This challenge responds to **the urgent need for innovative, explainable, and replicable AI solutions** in low-resource settings, addressing national and regional priorities such as **early cancer detection, diabetes, and maternal and child health**. The GHIF provides an **international platform to showcase co-created and scalable solutions for Africa**.



## Objectives



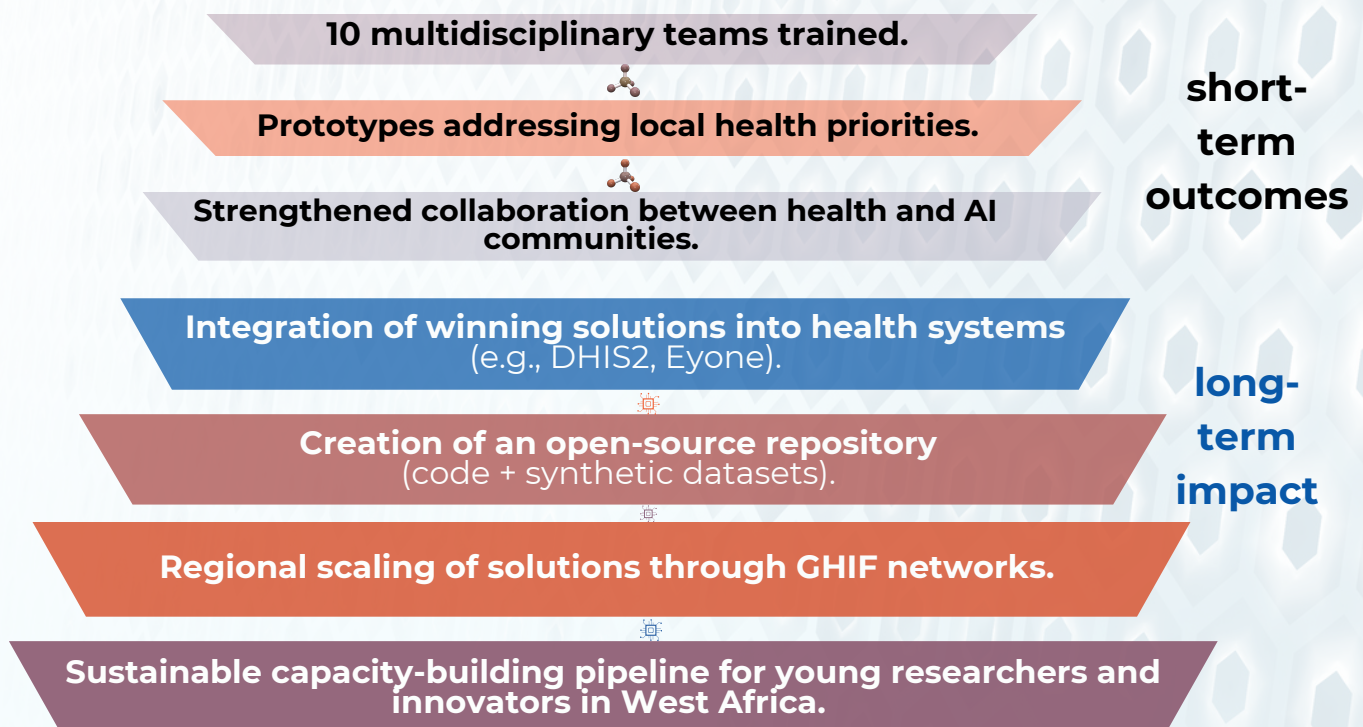
## Target Audience and Beneficiaries

**Participants:** Teams of 3–5 members, including at least one clinician/public health expert and one AI/data scientist.

**Stakeholders:** Researchers, start-ups, students, NGOs, community health workers, and public institutions.

**Beneficiaries:** Health systems, local communities, and policy makers through improved capacity, evidence-based tools, and strengthened regional collaboration.

## Outcomes and Long-term Impact



## Event Structure

**Duration:** 6–8 weeks (September–November 2025).

**Format:** Pre-selection, checkpoints, mentorship, and final pitching

### Activities:

- Launch webinar and FAQ.
- Team formation and baseline solutions.
- Weekly mentoring (clinical, epidemiology, AI/ML, ethics).
- Prototype development with open/synthetic datasets.
- Final pitch of 5 selected teams at GHIF (8–10 slides + demo video).

**Deliverables per team:** functional prototype, ethical note, sustainability plan (DHIS2/clinical integration), open-source code & documentation.

## Timeline



## Partners

